



CEREBRUM

Automation And Telemetry Platform

APPLICATION EXAMPLES

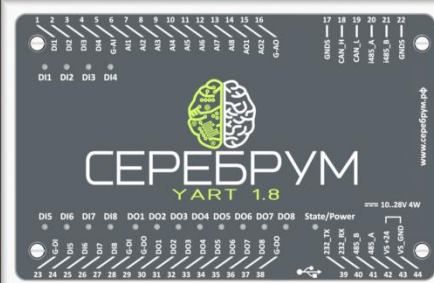
CEREBRUM Automation Platform


YART 1.8

The CEREBRUM controllers are designed to build high-tech control systems, manage monitoring and telemetry engineering systems and machines

IOT GSM ETHERNET

GREEN MOTION

PLC (FBD, C*)	8xAI U 0-10V I 0-20mA R 0-400 KΩ	2xAO U 0-10V I 0-20mA	RS485	Ethernet
AUTO PID				
40KB RAM				
16KB FRAM				
4KB BRAM				
2Kbit RAM				
2Kbit FRAM				
ARM-Cortex-M4 @ 164 mHz				
YART BUS				
Clock				
8xDI 7 kHz* uSD	8xDO AC/DC optorelay PWM	RS485 RS232 USB Dev	DC	DC
				IoT Modbus RTU User protocol Modbus TCP Slave YART LINK Archive 32GB uSD

PLC (FBD, C*)	DC	DC	6xDI	3xENCODER 1 x TTL-HTL, SIN/COS, SSI, EnDat 2 x HTL
AUTO PID				
40KB RAM				
16KB FRAM				
4KB BRAM				
2Kbit RAM				
2Kbit FRAM				
ARM-Cortex-M4 @ 164 mHz				
YART BUS				
RS485				
Ethernet				
4xDO DC optotransistor PWM	1xAO U 0-10V I 0-20mA	4xAI U 0-10V I 0-20mA		

Universal Input/Output Expansion Units And Communication Modules

KNOT
bus splitter



16DI
16 digital inputs



16DO
16 digital outputs



8AI - 8 high-precision
analog inputs



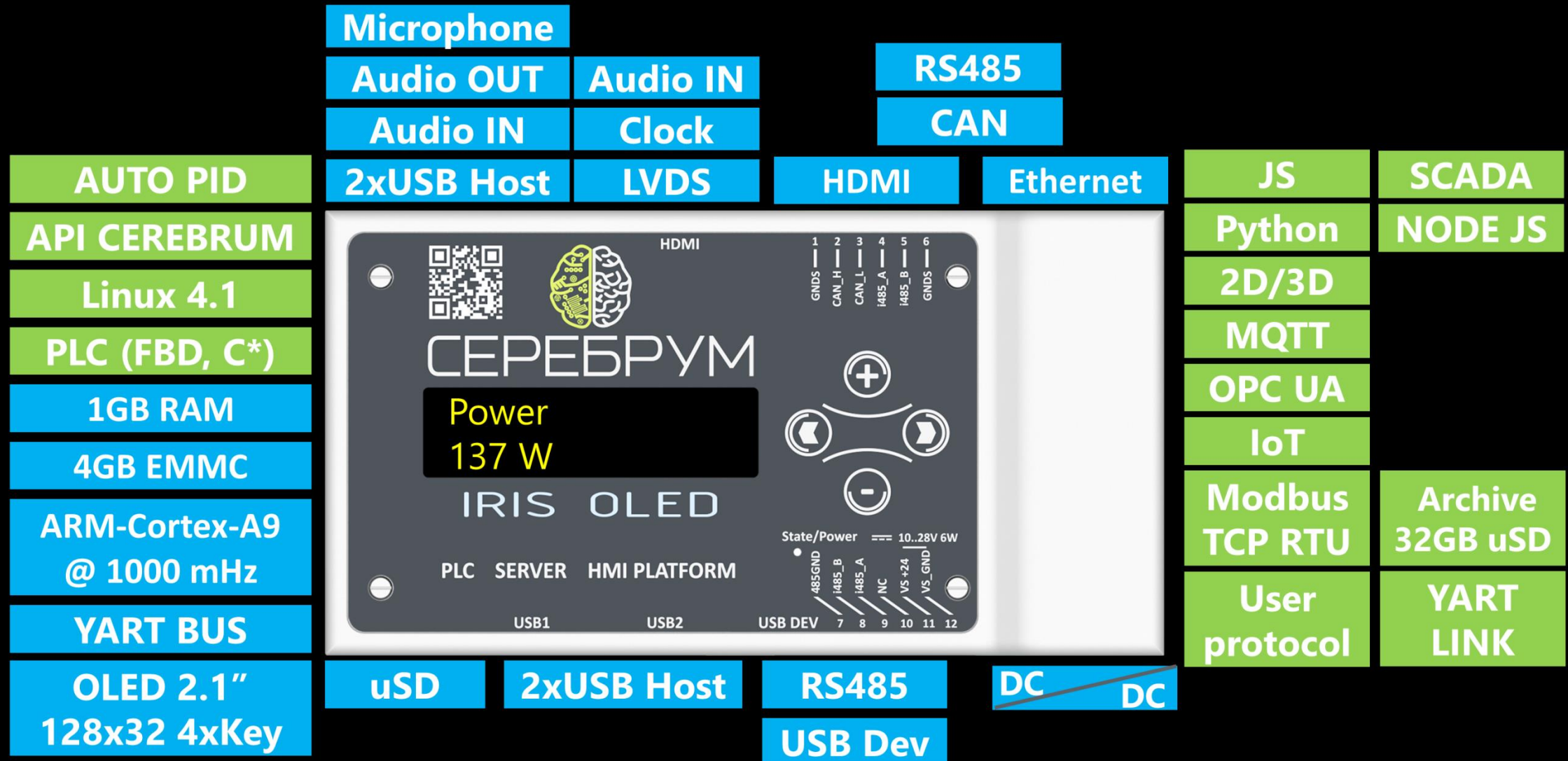
8AO - 8 high-precision
analog outputs



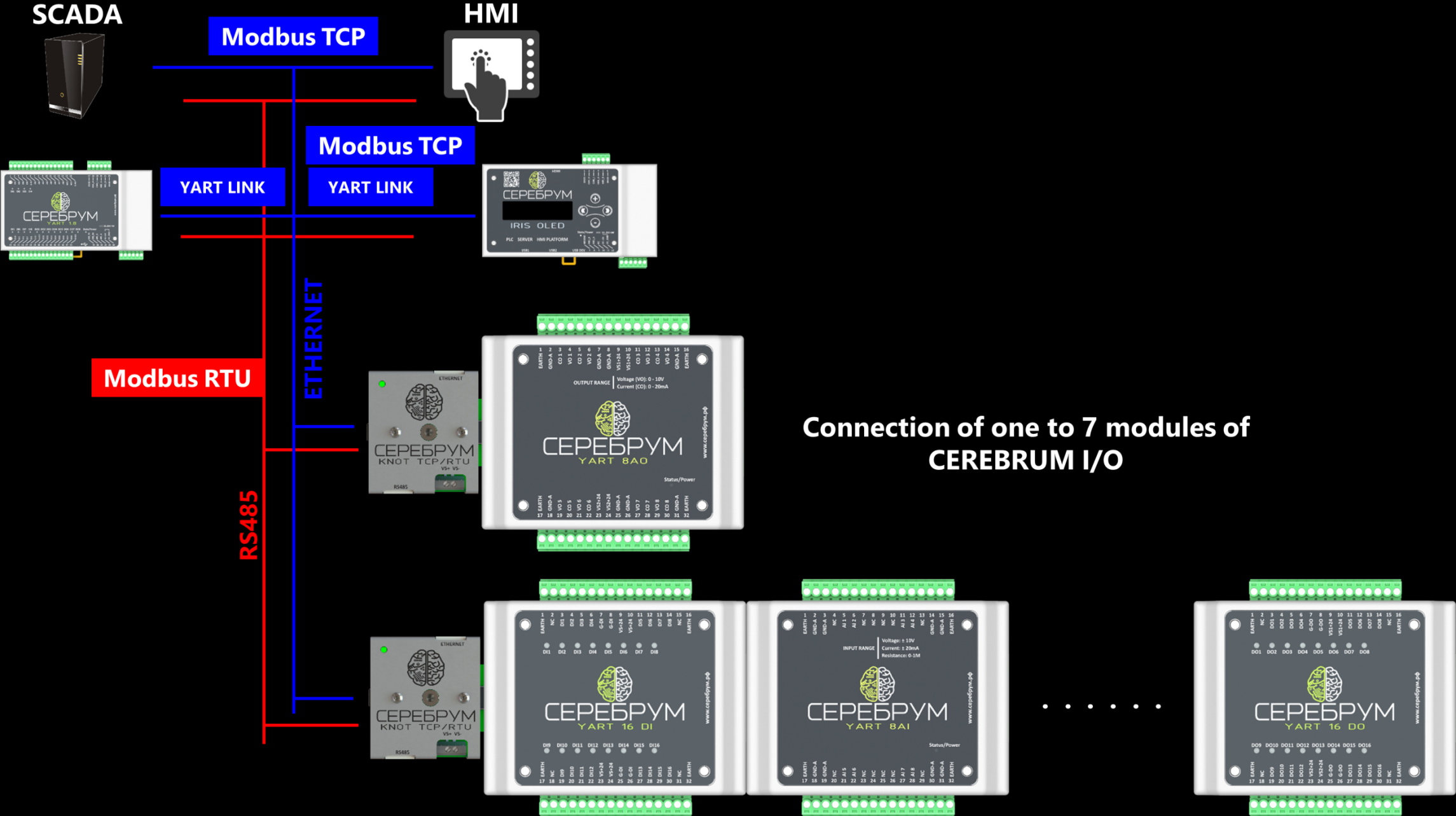
NEURO 3G - GSM 3G,
GLONASS/GPS



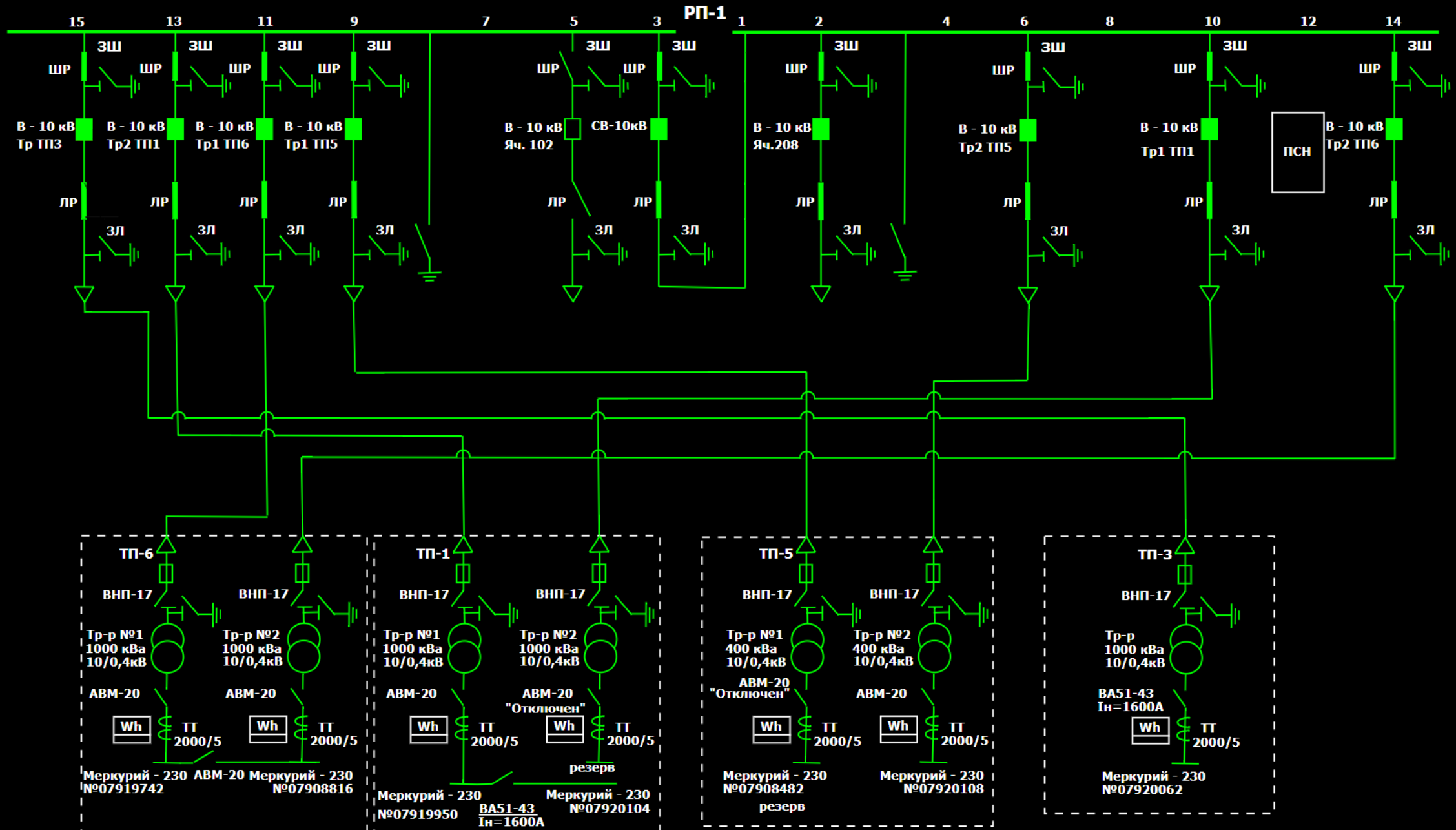
PROGRAMMABLE LOGIC CONTROLLER IRIS



Distributed IO Carrier Module: Modbus TCP, Modbus RTU, YART LINK



10 kV Grid Substation Telemetry



10 kV Grid Substation Telemetry

System Description

The 10/0.4 kV grid substation telemetry

The CEREBRUM system functions:

- ✓ Switching devices monitoring and protection
- ✓ Energy meters data acquisition
- ✓ Local and global WEB access over the Internet

Hardware CEREBRUM

Hardware	Quantity	Purpose
PLC YART 1.8	1	Status signals gathering and processing, server and local facilities communications
Module 16DI	3	Digital inputs
mySCADA server CerebrumCloud	1	WEB server data indication, access and authentication control, managing telemetry data archives

Shopping Center Electrical Energy Audit

Электричество

Счетчики воды

ЩУТЗ

Вентиляция

Щиты распределител...

Электрические Счетч...

Водяные счетчики

ИТП

Освещение, обогрев

Тепловые счетчики

Кондиционеры

Холодильный центр

Фанкойлы

Вентиляция МО

Электр. счетчики стар...

Прямки, загорованн...

Основной экран

18 ИК




Схема №1

QF1.2

QF2

Схема №2

QF2.1

QF2.2

QF2.3

QF2.4

QF2.5

QF2.6

QF2.7

QF2.8

QF2.9

QF2.10

QF2.11

Т202.2ЩМР1.Ввод2

Частота электрической сети	F, Гц	50.00
Напряжение на 1-й фазе	U _{1B} , В	226.80
Напряжение на 2-й фазе	U _{2B} , В	228.11
Напряжение на 3-й фазе	U _{3B} , В	226.81
Сила тока на 1-й фазе	I _{1A} , А	0.13
Сила тока на 2-й фазе	I _{2A} , А	0.20
Сила тока на 3-й фазе	I _{3A} , А	0.16
Мощность активная по сумме фаз	P, Ватт	103.88
Мощность активная по 1-й фазе	P ₁ , Ватт	25.22
Мощность активная по 2-й фазе	P ₂ , Ватт	43.59
Мощность активная по 3-й фазе	P ₃ , Ватт	35.07
Мощность полная по сумме фаз	S, ВА	112.47
Энергия активная	EA, Ватт*Час	1099.32
Энергия активная по тарифу 1	EAT1, Ватт*Час	0.00
Энергия активная по тарифу 2	EAT2, Ватт*Час	0.00

2ЩМР1. CE102M5

Частота электрической сети	F, Гц	50.01
Напряжение	U, В	228.62
Сила тока	I, А	0.00
Мощность активная	P, Ватт	0.00
Энергия активная	EA, Ватт*Час	24.84
Энергия активная по тарифу 1	EAT1, Ватт*Час	24.84
Энергия активная по тарифу 2	EAT2, Ватт*Час	0.00

2ЩМР2. CE102M5

Частота электрической сети	F, Гц	50.01
Напряжение	U, В	223.56
Сила тока	I, А	0.00
Мощность активная	P, Ватт	0.00
Энергия активная	EA, Ватт*Час	41.71
Энергия активная по тарифу 1	EAT1, Ватт*Час	41.71
Энергия активная по тарифу 2	EAT2, Ватт*Час	0.00

Shopping Centre Electrical Energy Audit

System description

The system is built around the shopping center's energy metering system.
The data is collected by MasterSCADA via Modbus TCP protocol.
The total amount of 147 energy meters are integrated to the system by using just seven Cerebrum PLCs as communication bridges.

CEREBRUM Equipment Used

Hardware	Quantity	Purpose
PLC YART 1.8	7	The energy meters data gathering and processing

Industrial Boiler Automation And Telemetry

Жилсервис

К Н Г

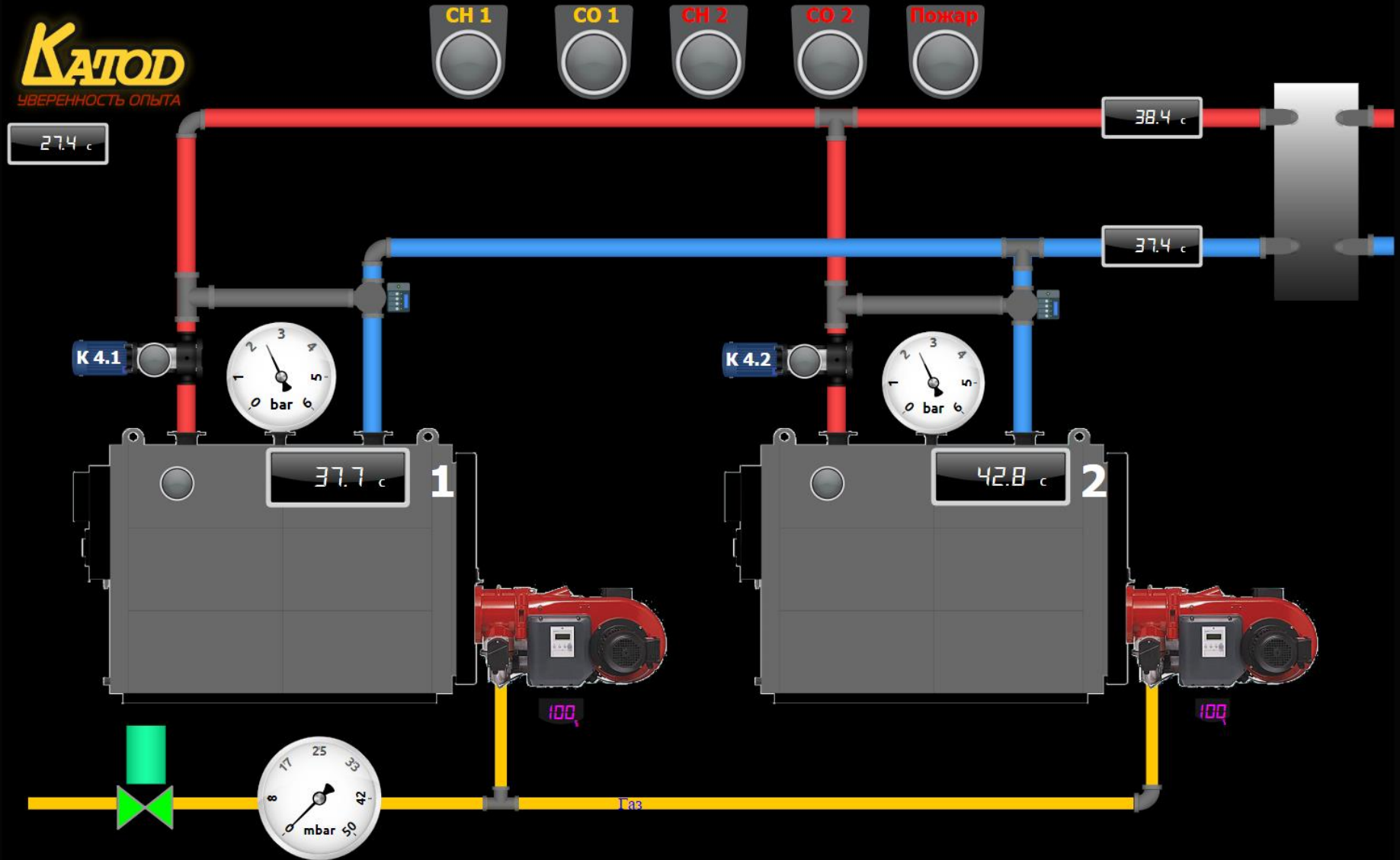
Катод

К Н Э Г

УСК УКК



KATOD
УВЕРЕННОСТЬ ОПЫТА



Industrial Boiler Automation And Telemetry

System description

The industrial gas boiler automation has been implemented in Saint Petersburg.

Features

- ✓ PID controller's parameters online auto tuning
- ✓ Heat, energy and water metering devices acquisition
- ✓ Gas leak and safety sensors operations, access control
- ✓ WEB server for local and Internet control and monitoring
- ✓ Map integrated visualization for multiple boilers instances
- ✓ Direct boiler control

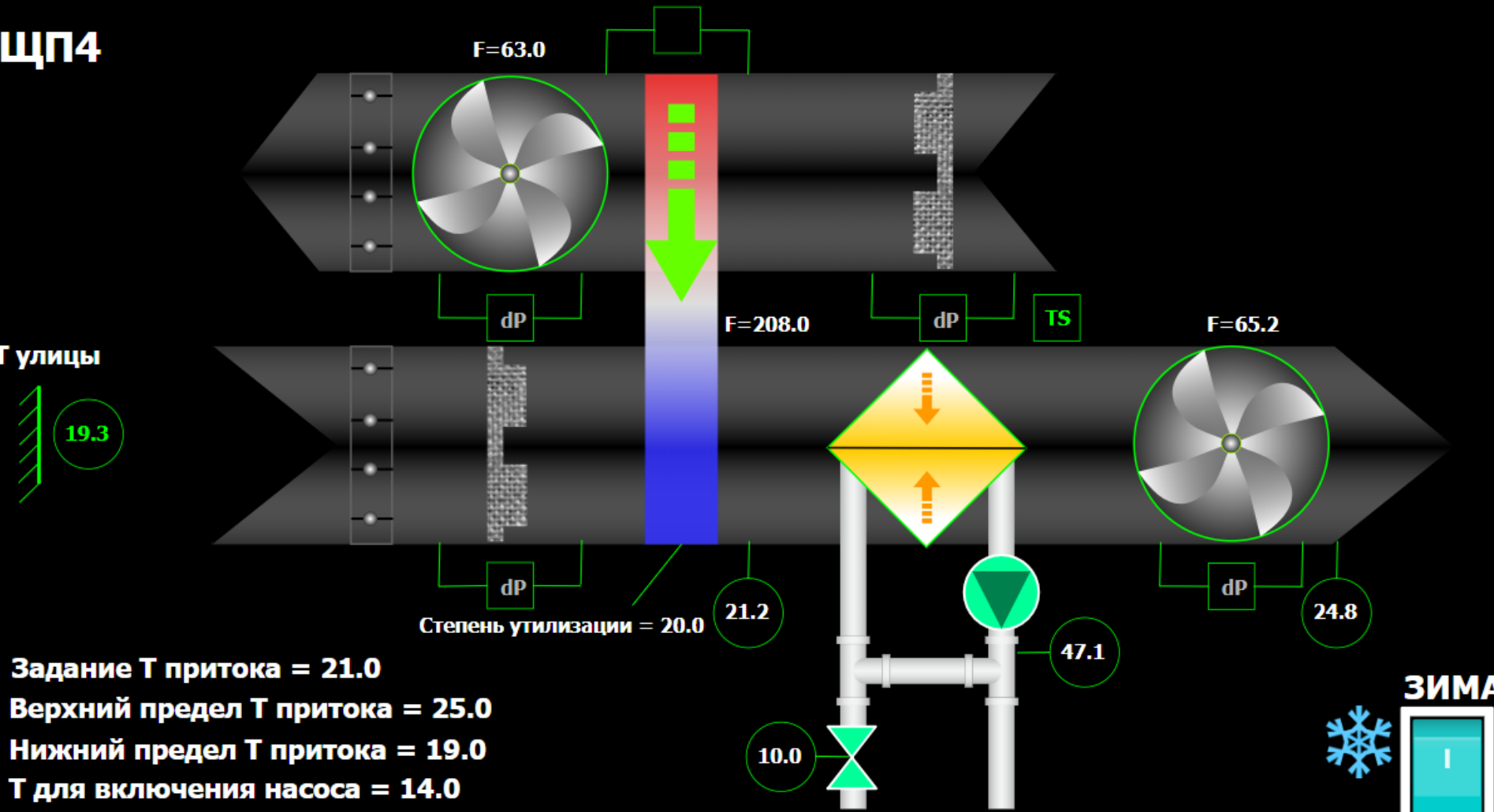
CEREBRUM Equipment Used

Hardware	Quantity	Purpose
PLC YART 1.8	2	Feedback signals processing, server data exchange, energy meters communication, control algorithm processing
Module 16DI	1	Digital inputs
Module 16DO	1	Digital outputs
NEURO 3G	1	3G/GPRS data networking services
mySCADA server CerebrumCloud	1	WEB server, access control, data historizing. A single mySCADA server carries up to 50 boilers simultaneously

Educational Building's Ventilation Systems Automation and Telemetry

ЩП4

Т улицы



Задание Т притока = 21.0
Верхний предел Т притока = 25.0
Нижний предел Т притока = 19.0
Т для включения насоса = 14.0

Режим работы

- АВТО
- ВЫКЛ
- ОЖИДАНИЕ
- ПОНИЖЕННЫЙ
- ЭКОНОМ
- КОМФОРТ

ЗИМА

ЛЕТО

15:59 06/06/18 РАБОТАЕТ

23.5 °C

Действующая 23 °C Температура воздуха

дистанционное управление

Расписание на неделю

Пн	Вт	Ср	Чт	Пт	Сб	Вс
ВЫКЛ	ВЫКЛ	ВЫКЛ	ВЫКЛ	ВЫКЛ	ВЫКЛ	ВЫКЛ
ВКЛ	ВКЛ	ВКЛ	ВКЛ	ВКЛ	ВКЛ	ВКЛ

Температура наружного воздуха, °C	10.5
Температура приточного воздуха, °C	17.1
Температура обратной воды, °C	19.1
Уставка температуры воздуха, °C	23
Период года	ЛЕТО
Производительность вент. П, %	60
Производительность вент. В, %	60

Educational Building's Ventilation Systems Automation and Telemetry

System description

Rotary recuperator equipped HVAC unit control system

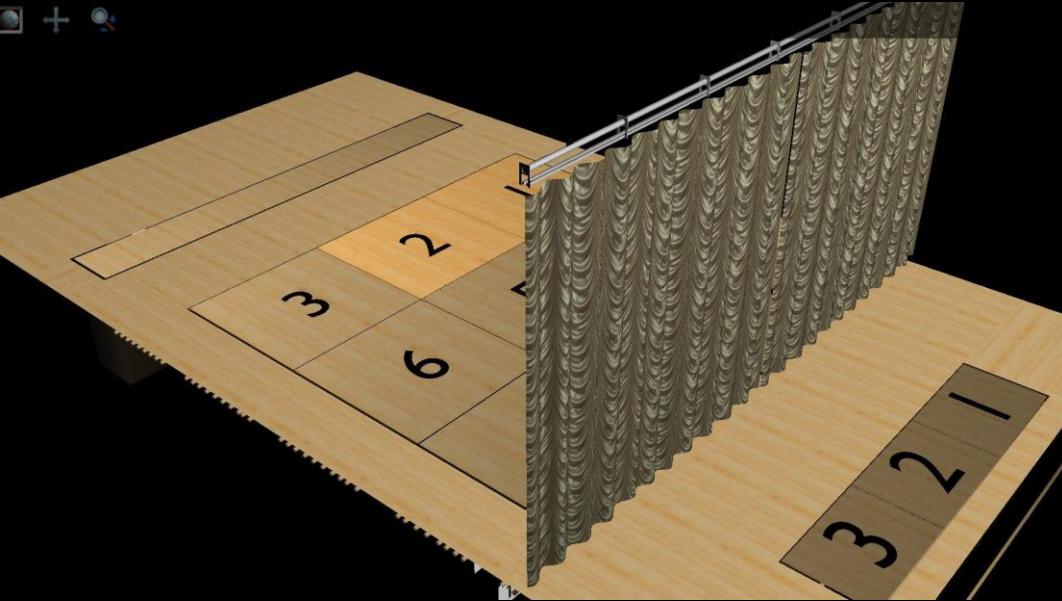
Features

- ✓ Control of ventilation unit
- ✓ Control by schedule
- ✓ PID controller's parameters online auto tuning
- ✓ Faults diagnostics and indication
- ✓ Managing of data exchange with the mySCADA server
- ✓ Data exchange with a local Samkoon console via RS485 interface (Modbus RTU)
- ✓ WEB server for local and Internet control and monitoring

CEREBRUM Equipment Used

Hardware	Quantity	Purpose
PLC YART 1.8	1	Feedback signals processing, server data exchange, energy meters communication, control algorithm processing
mySCADA server CerebrumCloud	1	WEB server, access control, data historizing. A single mySCADA server carries up to 50 systems simultaneously

Smart Theatre Control And Automaton System



Представления

Сменить Текущее представление: 1 - верх 2 - низ

Активировать Текущий акт: 1 - верх 2 - низ

Назад Вперед

Акты

1 - верх 2 - низ Комментарий к акту

Доступные приводы

Шт.1	Шт.2	Шт.3	Шт.4	Шт.5	Шт.6	Шт.7	Шт.8	Шт.9	Шт.10	Шт.11	Шт.12	Шт.13	Шт.14	Шт.15	Шт.16	Шт.17	Шт.18	Шт.19	Шт.20	Шт.21

Выбранные приводы

Имя	Тип привода	Вкл. импульс	Управление	Вкл. состояние	Вкл. импульс	Время в пути	Время работы	Уровень сигнала
Ярус 2	0.000	0.000	Кнопка 2	-2.550	1.000	3.000	0.000	0
Ярус 2	0.000	0.000	Кнопка 1	0.000	1.000	1.000	0.000	0

Все Штанкеты

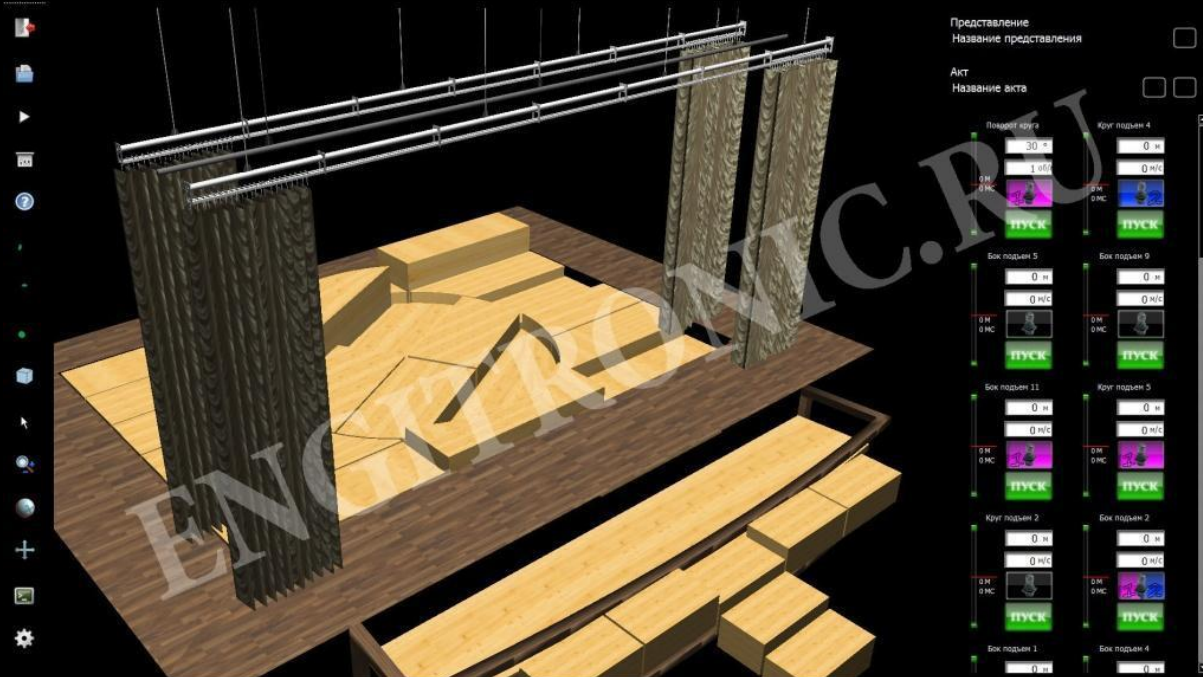
Шт.1	Шт.2	Шт.3	Шт.4	Шт.5	Шт.6	Шт.7	Шт.8	Шт.9	Шт.10	Шт.11	Шт.12	Шт.13	Шт.14	Шт.15	Шт.16	Шт.17	Шт.18	Шт.19	Шт.20	Шт.21

Выбор **Выбор** **Очистить**

Выбрать всё Добавить выбранные Очистить всё

Стоп всё

Калибровка Выключить Сменить польз. Представления Приводы Пользователь: тмс (машинист) зашел в: 14:59:48 15/11/25 | Связь с сервером: Соединен



Представление: Пробный заход

Объект 3D

0.6 1.2 1.4 1.6 1.8 2.0 2.2 2.4 2.6 2.8 3.0 3.2 3.4 3.6 3.8 4.0 4.2 4.4 4.6 4.8 5.0 5.2 5.4 5.6 5.8 6.0 6.2 6.4 6.6 6.8 7.0 7.2 7.4 7.6 7.8 8.0 8.2 8.4 8.6 8.8 9.0 9.2 9.4 9.6 9.8 10.0 10.2 10.4 10.6 10.8 11.0 11.2 11.4 11.6 11.8 12.0 12.2 12.4 12.6 12.8 13.0 13.2 13.4 13.6 13.8 14.0 14.2 14.4 14.6 14.8 15.0 15.2 15.4 15.6 15.8 16.0 16.2 16.4 16.6 16.8 17.0 17.2 17.4 17.6 17.8 18.0 18.2 18.4 18.6 18.8 19.0 19.2 19.4 19.6 19.8 20.0 20.2 20.4 20.6 20.8 21.0 21.2 21.4 21.6 21.8 22.0 22.2 22.4 22.6 22.8 23.0 23.2 23.4 23.6 23.8 24.0 24.2 24.4 24.6 24.8 25.0 25.2 25.4 25.6 25.8 26.0 26.2 26.4 26.6 26.8 27.0 27.2 27.4 27.6 27.8 28.0 28.2 28.4 28.6 28.8 29.0 29.2 29.4 29.6 29.8 30.0 30.2 30.4 30.6 30.8 31.0 31.2 31.4 31.6 31.8 32.0 32.2 32.4 32.6 32.8 33.0 33.2 33.4 33.6 33.8 34.0 34.2 34.4 34.6 34.8 35.0 35.2 35.4 35.6 35.8 36.0 36.2 36.4 36.6 36.8 37.0 37.2 37.4 37.6 37.8 38.0 38.2 38.4 38.6 38.8 39.0 39.2 39.4 39.6 39.8 40.0 40.2 40.4 40.6 40.8 41.0 41.2 41.4 41.6 41.8 42.0 42.2 42.4 42.6 42.8 43.0 43.2 43.4 43.6 43.8 44.0 44.2 44.4 44.6 44.8 45.0 45.2 45.4 45.6 45.8 46.0 46.2 46.4 46.6 46.8 47.0 47.2 47.4 47.6 47.8 48.0 48.2 48.4 48.6 48.8 49.0 49.2 49.4 49.6 49.8 50.0 50.2 50.4 50.6 50.8 51.0 51.2 51.4 51.6 51.8 52.0 52.2 52.4 52.6 52.8 53.0 53.2 53.4 53.6 53.8 54.0 54.2 54.4 54.6 54.8 55.0 55.2 55.4 55.6 55.8 56.0 56.2 56.4 56.6 56.8 57.0 57.2 57.4 57.6 57.8 58.0 58.2 58.4 58.6 58.8 59.0 59.2 59.4 59.6 59.8 60.0 60.2 60.4 60.6 60.8 61.0 61.2 61.4 61.6 61.8 62.0 62.2 62.4 62.6 62.8 63.0 63.2 63.4 63.6 63.8 64.0 64.2 64.4 64.6 64.8 65.0 65.2 65.4 65.6 65.8 66.0 66.2 66.4 66.6 66.8 67.0 67.2 67.4 67.6 67.8 68.0 68.2 68.4 68.6 68.8 69.0 69.2 69.4 69.6 69.8 70.0 70.2 70.4 70.6 70.8 71.0 71.2 71.4 71.6 71.8 72.0 72.2 72.4 72.6 72.8 73.0 73.2 73.4 73.6 73.8 74.0 74.2 74.4 74.6 74.8 75.0 75.2 75.4 75.6 75.8 76.0 76.2 76.4 76.6 76.8 77.0 77.2 77.4 77.6 77.8 78.0 78.2 78.4 78.6 78.8 79.0 79.2 79.4 79.6 79.8 80.0 80.2 80.4 80.6 80.8 81.0 81.2 81.4 81.6 81.8 82.0 82.2 82.4 82.6 82.8 83.0 83.2 83.4 83.6 83.8 84.0 84.2 84.4 84.6 84.8 85.0 85.2 85.4 85.6 85.8 86.0 86.2 86.4 86.6 86.8 87.0 87.2 87.4 87.6 87.8 88.0 88.2 88.4 88.6 88.8 89.0 89.2 89.4 89.6 89.8 90.0 90.2 90.4 90.6 90.8 91.0 91.2 91.4 91.6 91.8 92.0 92.2 92.4 92.6 92.8 93.0 93.2 93.4 93.6 93.8 94.0 94.2 94.4 94.6 94.8 95.0 95.2 95.4 95.6 95.8 96.0 96.2 96.4 96.6 96.8 97.0 97.2 97.4 97.6 97.8 98.0 98.2 98.4 98.6 98.8 99.0 99.2 99.4 99.6 99.8 100.0 100.2 100.4 100.6 100.8 101.0 101.2 101.4 101.6 101.8 102.0 102.2 102.4 102.6 102.8 103.0 103.2 103.4 103.6 103.8 104.0 104.2 104.4 104.6 104.8 105.0 105.2 105.4 105.6 105.8 106.0 106.2 106.4 106.6 106.8 107.0 107.2 107.4 107.6 107.8 108.0 108.2 108.4 108.6 108.8 109.0 109.2 109.4 109.6 109.8 110.0 110.2 110.4 110.6 110.8 111.0 111.2 111.4 111.6 111.8 112.0 112.2 112.4 112.6 112.8 113.0 113.2 113.4 113.6 113.8 114.0 114.2 114.4 114.6 114.8 115.0 115.2 115.4 115.6 115.8 116.0 116.2 116.4 116.6 116.8 117.0 117.2 117.4 117.6 117.8 118.0 118.2 118.4 118.6 118.8 119.0 119.2 119.4 119.6 119.8 120.0 120.2 120.4 120.6 120.8 121.0 121.2 121.4 121.6 121.8 122.0 122.2 122.4 122.6 122.8 123.0 123.2 123.4 123.6 123.8 124.0 124.2 124.4 124.6 124.8 125.0 125.2 125.4 125.6 125.8 126.0 126.2 126.4 126.6 126.8 127.0 127.2 127.4 127.6 127.8 128.0 128.2 128.4 128.6 128.8 129.0 129.2 129.4 129.6 129.8 130.0 130.2 130.4 130.6 130.8 131.0 131.2 131.4 131.6 131.8 132.0 132.2 132.4 132.6 132.8 133.0 133.2 133.4 133.6 133.8 134.0 134.2 134.4 134.6 134.8 135.0 135.2 135.4 135.6 135.8 136.0 136.2 136.4 136.6 136.8 137.0 137.2 137.4 137.6 137.8 138.0 138.2 138.4 138.6 138.8 139.0 139.2 139.4 139.6 139.8 140.0 140.2 140.4 140.6 140.8 141.0 141.2 141.4 141.6 141.8 142.0 142.2 142.4 142.6 142.8 143.0 143.2 143.4 143.6 143.8 144.0 144.2 144.4 144.6 144.8 145.0 145.2 145.4 145.6 145.8 146.0 146.2 146.4 146.6 146.8 147.0 147.2 147.4 147.6 147.8 148.0 148.2 148.4 148.6 148.8 149.0 149.2 149.4 149.6 149.8 150.0 150.2 150.4 150.6 150.8 151.0 151.2 151.4 151.6 151.8 152.0 152.2 152.4 152.6 152.8 153.0 153.2 153.4 153.6 153.8 154.0 154.2 154.4 154.6 154.8 155.0 155.2 155.4 155.6 155.8 156.0 156.2 156.4 156.6 156.8 157.0 157.2 157.4 157.6 157.8 158.0 158.2 158.4 158.6 158.8 159.0 159.2 159.4 159.6 159.8 160.0 160.2 160.4 160.6 160.8 161.0 161.2 161.4 161.6 161.8 162.0 162.2 162.4 162.6 162.8 163.0 163.2 163.4 163.6 163.8 164.0 164.2 164.4 164.6 164.8 165.0 165.2 165.4 165.6 165.8 166.0 166.2 166.4 166.6 166.8 167.0 167.2 167.4 167.6 167.8 168.0 168.2 168.4 168.6 168.8 169.0 169.2 169.4 169.6 169.8 170.0 170.2 170.4 170.6 170.8 171.0 171.2 171.4 171.6 171.8 172.0 172.2 172.4 172.6 172.8 173.0 173.2 173.4 173.6 173.8 174.0 174.2 174.4 174.6 174.8 175.0 175.2 175.4 175.6 175.8 176.0 176.2 176.4 176.6 176.8 177.0 177.2 177.4 177.6 177.8 178.0 178.2 178.4 178.6 178.8 179.0 179.2 179.4 179.6 179.8 180.0 180.2 180.4 180.6 180.8 181.0 181.2 181.4 181.6 181.8 182.0 182.2 182.4 182.6 182.8 183.0 183.2 183.4 183.6 183.8 184.0 184.2 184.4 184.6 184.8 185.0 185.2 185.4 185.6 185.8 186.0 186.2 186.4 186.6 186.8 187.0 187.2 187.4 187.6 187.8 188.0 188.2 188.4 188.6 188.8 189.0 189.2 189.4 189.6 189.8 190.0 190.2 190.4 190.6 190.8 191.0 191.2 191.4 191.6 191.8 192.0 192.2 192.4 192.6 192.8 193.0 193.2 193.4 193.6 193.8 194.0 194.2 194.4 194.6 194.8 195.0 195.2 195.4 195.6 195.8 196.0 196.2 196.4 196.6 196.8 197.0 197.2 197.4 197.6 197.8 198.0 198.2 198.4 198.6 198.8 199.0 199.2 199.4 199.6 199.8 200.0 200.2 200.4 200.6 200.8 201.0 201.2 201.4 201.6 201.8 202.0 202.2 202.4 202.6 202.8 203.0 203.2 203.4 203.6 203.8 204.0 204.2 204.4 204.6 204.8 205.0 205.2 205.4 205.6 205.8 206.0 206.2 206.4 206.6 206.8 207.0 207.2 207.4 207.6 207.8 208.0 208.2 208.4 208.6 208.8 209.0 209.2 209.4 209.6 209.8 210.0 210.2 210.4 210.6 210.8 211.0 211.2 211.4 211.6 211.8 212.0 212.2 212.4 212.6 212.8 213.0 213.2 213.4 213.6 213.8 214.0 214.2 214.4 214.6 214.8 215.0 215.2 215.4 215.6 215.8 216.0 216.2 216.4 216.6 216.8 217.0 217.2 217.4 217.6 217.8 218.0 218.2 218.4 218.6 218.8 219.0 219.2 219.4 219.6 219.8 220.0 220.2 220.4 220.6 220.8 221.0 221.2 221.4 221.6 221.8 222.0 222.2 222.4 222.6 222.8 223.0 223.2 223.4 223.6 223.8 224.0 224.2 224.4 224.6 224.8 225.0 225.2 225.4 225.6 225.8 226.0 226.2 226.4 226.6 226.8 227.0 227.2 227.4 227.6 227.8 228.0 228.2 228.4 228.6 228.8 229.0 229.2 229.4 229.6 229.8 230.0 230.2 230.4 230.6 230.8 231.0 231.2 231.4 231.6 231.8 232.0 232.2 232.4 232.6 232.8 233.0 233.2 233.4 233.6 233.8 234.0 234.2 234.4 234.6 234.8 235.0 235.2 235.4 235.6 235.8 236.0 236.2 236.4 236.6 236.8 237.0 237.2 237.4 237.6 237.8 238.0 238.2 238.4 238.6 238.8 239.0 239.2 239.4 239.6 239.8 240.0 240.2 240.4 240.6 240.8 241.0 241.2 241.4 241.6 241.8 242.0 242.2 242.4 242.6 242.8 243.0 243.2 243.4 243.6 243.8 244.0 244.2 244.4 244.6 244.8 245.0 245.2 245.4 245.6 245.8 246.0 246.2 246.4 246.6 246.8 247.0 247.2 247.4 247.6 247.8 248.0 248.2 248.4 248.6 248.8 249.0 249.2 249.4 249.6 249.8 250.0 250.2 250.4 250.6 250.8 251.0 251.2 251.4 251.6 251.8 252.0 252.2 252.4 252.6 252.8 253.0 253.2 253.4 253.6 253.8 254.0 254.2 254.4 254.6 254.8 255.0 255.2 255.4 255.6 255.8 256.0 256.2 256.4 256.6 256.8 257.0 257.2 257.4 257.6 257.8 258.0 258.2 258.4 258.6 258.8 259.0 259.2 259.4 259.6 259.8 260.0 260.2 260.4 260.6 260.8 261.0 261.2 261.4 261.6 261.8 262.0 262.2 262.4 262.6 262.8 263.0 263.2 263.4 263.6 263.8 264.0 264.2 264.4 264.6 264.8 265.0 265.2 265.4 265.6 265.8 266.0 266.2 266.4 266.6 266.8 267.0 267.2 267.4 267.6 267.8 268.0 268.2 268.4 268.6 268.8 269.0 269.2 269.4 269.6 269.8 270.0 270.2 270.4 270.6 270.8 271.0 271.2 271.4 271.6 271.8 272.0 272.2 272.4 272.6 272.8 273.0 273.2 273.4 273.6 273.8 274.0 274.2 274.4 274.6 274.8 275.0 275.2 275.4 275.6 275.8 276.0 276.2 276.4 276.6 276.8 277.0 277.2 277.4 277.6 277.8 278.0 278.2 278.4 278.6 278.8 279.0 279.2 279.4 279.6 279.8 280.0 280.2 280.4 280.6 280.8 281.0 281.2 281.4 281.6 281.8 282.0 282.2 282.4 282.6 282.8 283.0 283.2 283.4 283.6 283.8 284.0 284.2 284.4 284.6 284.8 285.0 285.2 285.4 285.6 285.8 286.0 286.2 286.4 286.6 286.8 287.0 287.2 287.4 287.6 287.8 288.0 288.2 288.4 288.6 288.8 289.0 289.2 289.4 289.6 289.8 290.0 290.2 290.4 290.6 290.8 291.0 291.2 291.4 291.6 291.8 292.0 292.2 292.4 292.6 292.8 293.0 293.2 293.4 293.6 293.8 294.0 294.2 294.4 294.6 294.8 295.0 295.2 295.4 295.6 295.8 296.0 296.2 296.4 296.6 296.8 297.0 297.2 297.4 297.6 297.8 298.0 298.2 298.4 298.6 298.8 299.0 299.2 299.4 299.6 299.8 300.0 300.2 300.4 300.6 300.8 301.0 301.2 301.4 301.6 301.8 302.0 302.2 302.4 302.6 302.8 303.0 303.2 303.4 303.6 303.8 304.0 304.2 304.4 304.6 304.8 305.0 305.2 305.4 305.6 305.8 306.0 306.2 306.4 306.6 306.8 307.0 307.2 307.4 307.6 307.8 308.0 308.2 308.4 308.6 308.8 309.0 309.2 309.4 309.6 309.8 310.0 310.2 310.4 310.6 310.8 311.0 311.2 311.4 311.6 311.8 312.0 312.2 312.4 312.6 312.8 313.0 313.2 313.4 313.6 313.8 314.0 314.2 314.4 314.6 314.8 315.0 315.2 315.4 315.6 315.8 316.0 316.2 316.4 316.6 316.8 317.0 317.2 317.4 317.6 317.8 318.0 318.2 318.4 318.6 318.8 319.0 319.2 319.4 319.6 319.8 320.0 320.2 320.4 320.6 320.8 321.0 321.2 321.4 321.6 321.8 322.0 322.2 322.4 322.6 322.8 323.0 323.2 323.4 323.6 323.8 324.0 324.2 324.4 324.6 324.8 325.0 325.2 325.4 325.6 325.8 326.0 326.2 326.4 326.6 326.8 327.0 327.2 327.4 327.6 327.8 328.0 328.2 328.4 328.6 328.8 329.0 329.2 329.4 329.6 329.8 330.0 330.2 330.4 330.6 330.8 331.0 331.2 331.4 331.6 331.8 332.0 332.2 332.4 332.6 332.8 333.0 333.2 333.4 333.6 333.8 334.0 334.2 334.4 334.6 334.8 335.0 335.2 335.4 335.6 335.8 336.0 336.2 336.4 336.6 336.8 337.0 337.2 337.4 337.6 337.8 338.0 338.2 338.4 338.6 338.8 339.0 339.2 339.4 339.6 339.8 340.0 340.2 340.4 340.6 340.8 341.0 341.2 341.4 341.6 341.8 342.0 342.2 342.4 342.6 342.8 343.0 343.2 343.4 343.6 343.8 344.0 344.2 344.4 344.6 344.8 345.0 345.2 345.4 345.6 345.8 346.0 346.2 346.4 346.6 346.8 347.0 347.2 347.4 347.6 347.8 348.0 348.2 348.4 348.6 348.8 349.0 349.2 349.4 349.6 349.8 350.0 350.2 350.4 350.6 350.8 351.0 351.2 351.4 351.6 351.8 352.0 352.2 352.4 352.6 352.8 353.0 353.2 353.4 353.6 353.8 354.0 354.2 354.4 354.6 354.8 355.0 355.2 355.4 355.6 355.8 356.0 356.2 356.4 356.6 356.8 357.0 357.2 357.4 357.6 357.8 358.0 358.2 358.4 358.6 358.8 359.0 359.2 359.4 359.6 359.8 360.0 360.2 360.4 360.6 360.8 361.0 361.2 361.4 361.6 361.8 362.0 362.2 362.4 362.6 362.8 363.0 363.2 363.4 363.6 363.8 364.0 364.2 364.4 364.6 364.8 365.0 365.2 365.4 365.6 365.8 366.0 366.2 366.4 366.6 366.8 367.0 367.2 367.4 367.6 367.8 368.0 368.2 368.4 368.6 368.8 369.0 369.2 369.4 369.6 369.8 370.0 370.2 370.4 370.6 370.8 371.0 371.2 371.4 371.6 371.8 372.0 372.

Smart Theatre Control And Automaton System

Hardware CEREBRUM

System description

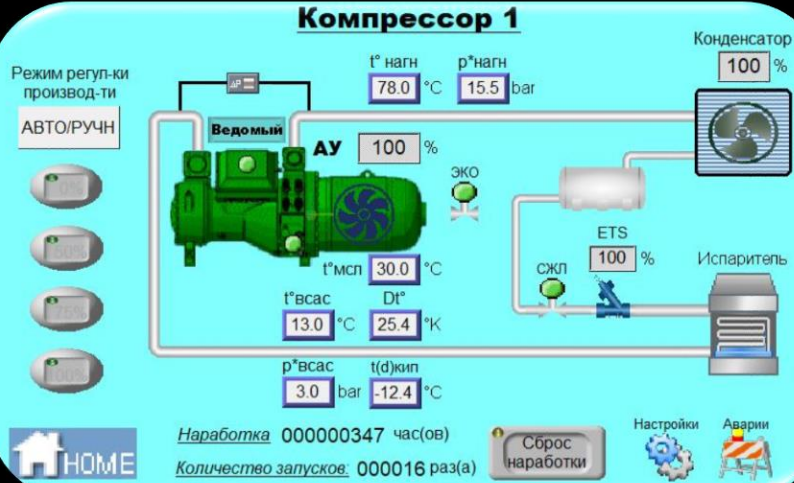
Electric drive control system for stage machinery

CEREBRUM functions:

- ✓ Drive's position and speed control
- ✓ Programmable drives coupling
- ✓ Synchronized control with an 3 mm positioning error
- ✓ Self tuned PID regulators
- ✓ Embedded diagnostic and fault detection features
- ✓ High speed control data transfer
- ✓ Database driven stage layout presets

Hardware	Quantity	Purpose
ПЛК GREEN MOTION	90	Individual control of AC drives. Feedback (encoder) sensor signal processing. Position and speed control Data communications
PLC YART 1.8	3	Processing of digital and analog signals from the operator's consoles
Custom designed software	3	Data visualization, flexible UI for settings, three-dimensional real-time stage indication, automatic drives positioning, operator access control, parameters and user actions logging.

The Ice Rink Liquid Cooling System



The Ice Rink Liquid Cooling System

System description

The liquid cooling unit controls the temperature of the refrigerant liquid (40% ethylene glycol) in a given range to ensure freezing and keeping ice on the standard hockey ice rink

CEREBRUM functions:

- ✓ Provides start-up algorithm, conditions control, maintains the required performance, pumps OFF control (primary and backup).
- ✓ The optimized pressure refrigerant loop control coupled with ice rink basement heating pumps
- ✓ Provides the required compressor's performance using the temperature sensors on the evaporator's inlet and outlet ports
- ✓ Multilevel protection system

Hardware CEREBRUM

Hardware	Quantity	Purpose
PLC YART 1.8	2	Control algorithm
Module 16DI	2	Digital inputs
HMI-panel (Weintek)	1	Data display

Plastic Extruder Control

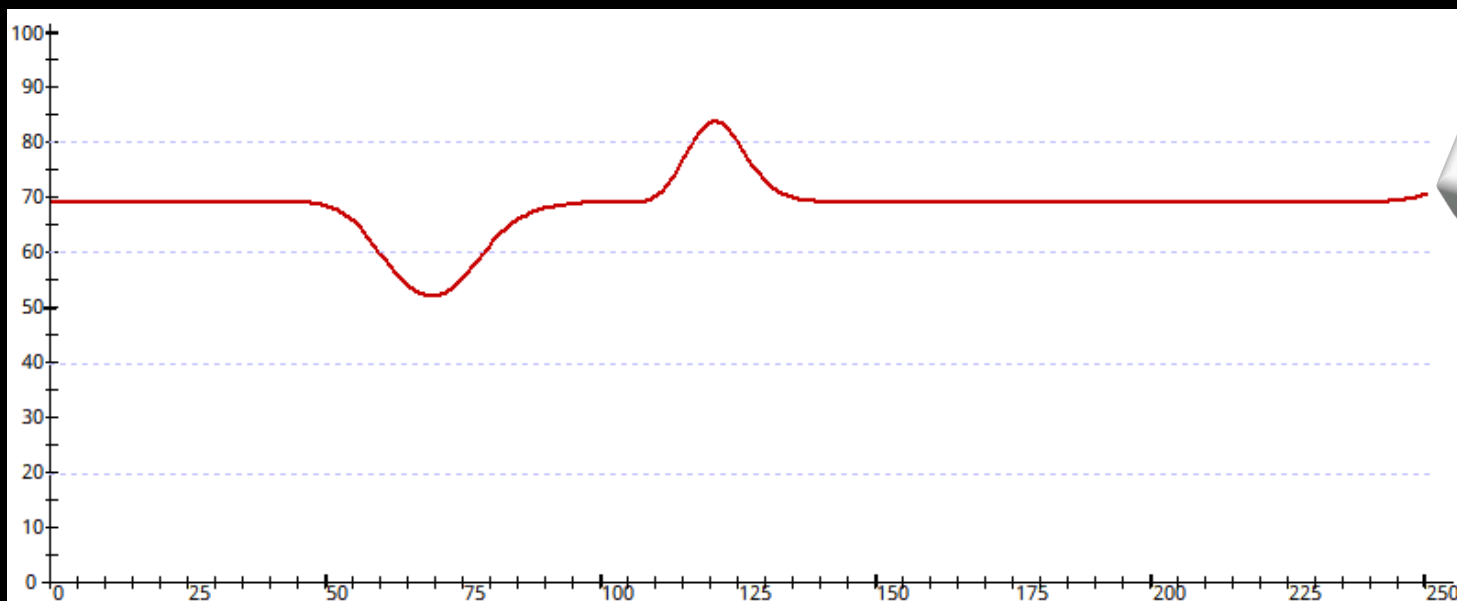
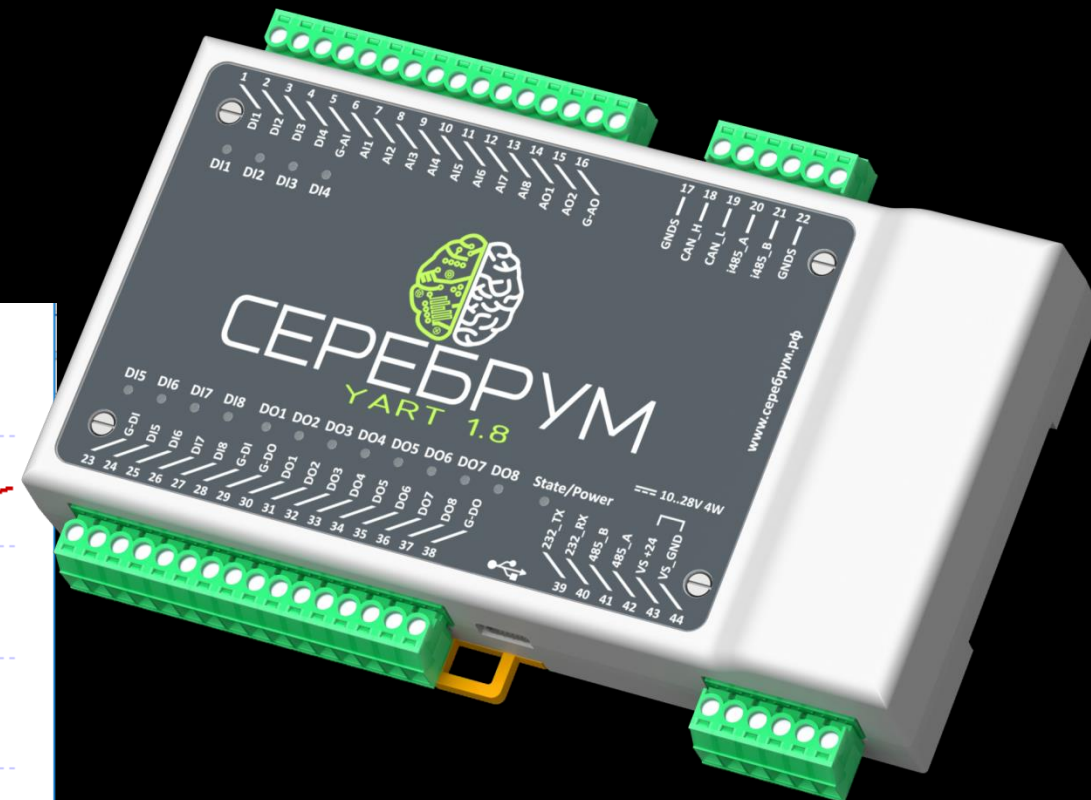


График №

Построить график	Сохранить график в БД	Линейная интерполяция	Сдвиг
Рабочий график	Загрузить график из БД	Ручной ввод	Переместить интервал

Кф.усил. Кол-во редак. точек

Время синхр. (мс.) X: Y:

22/06/18 15:49:12

Plastic Extruder Control

System description

Automated blow molding parison control
Managed molding weight distribution




CEREBRUM functions:

- ✓ Blow molding control
- ✓ Extruder PID control
- ✓ High speed sensors processing
- ✓ Data indication

Hardware CEREBRUM

Hardware	Quantity	Purpose
YART 1.8 PLC	1	Control algorithm processing
HMI panel (Weintek)	1	Data indication and interfacing

Vegetable Store Control And Telemetry System





Полное время


Д # Ч # М


W


Режим работы

 СУШКА ☒

 ЛЕЧЕНИЕ ☒

 ОХЛАЖДЕНИЕ ☒

 ХРАНЕНИЕ ☒

 ПРОГРЕВ ☒

Управление системой

пуск

стоп

Время работы системы

ДНИ	ЧАСЫ	МИНУТЫ
#	#	#

Ручное управление элементами системы

Приточные Вентиляторы

пуск

стоп

Осевые Вентиляторы

пуск

стоп

Тэны Осевых Вентиляторов

пуск

стоп

Обогрев Заслонок

пуск

стоп

Клапан приточного воздуха

##

Клапан рецикул. воздуха

##

Клапан удаляемого воздуха

##

Vegetable Store Control And Telemetry System

System description

CEREBRUM Automation Functions

- ✓ Automated and manual control modes
- ✓ Scheduled control
- ✓ Prescribed control modes
- ✓ Local network WEB HMI

Hardware CEREBRUM

Hardware	Quantity	Purpose
YART 1.8 PLC	1	Feedback signals processing, server data exchange, control algorithm processing
16DI Expansion Module	1	System IO space expansion
mySCADA Server CerebrumCloud	1	WEB server, access control, data historizing.

ёДом (yoDom), The Remote House Control System

ТЕПЛО/ВОДА

Т дома 11.0 °C
Т 24.3 °C

ХВС

ГВС

26133
м³

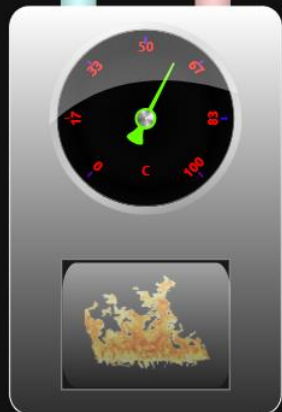
26133
м³

КОТЁЛ

P=2,2
T=51 °C



P=2,2
T=63 °C



Датчик +14.1 °C

СЕРВЕР

+1 °C
3 м/с 117 °

###



КОМФОРТ

24 °C

K1

K2

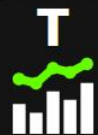


11 °C

K3

K4

СБЕРЕЖЕНИЕ



XLS



ЭЛЕКТРОСНАБЖЕНИЕ



Де

12124

кВт*ч

Но

04221

кВт*ч

ёDom (yoDom), The Remote House Control System

System description

Private houses system control and telemetry solution designed for efficient heat and electricity consuming.

CEREBRUM Automation Functions

- ✓ Smart multilevel heating control tuned from comfort to Eco energy consumptions
- ✓ AC grid parameters monitoring and fast protection features
- ✓ In house electricity system state monitoring
- ✓ Programmable ON\OFF channels for more comfort
- ✓ Meters data acquisition
- ✓ Climate control
- ✓ Internet available secured WEB control and monitoring pages

Hardware CEREBRUM

Hardware	Quantity	Purpose
YART 1.8 PLC	1	Feedback signals processing, server data exchange, energy meters communication, control algorithm processing
NEURO 3G	1	3G\GPRS module for remote communications
mySCADA Server CerebrumCloud	1	WEB server data indication, access and authentication control, managing telemetry data archives

www.serebrum.ru

2019 Saint Petersburg, Russia